

KSBU002

Evaluation board for GWBMD0x and GWBMD30



KSBU002 is universal evaluation board for GWBMD0x BLE module and GWBMD30 Bluetooth 5 ready module. With KSBU002, user can evaluate their firmware and circuits design easily, shorten the development time.

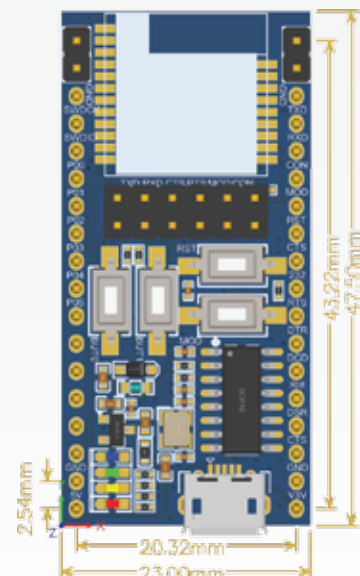
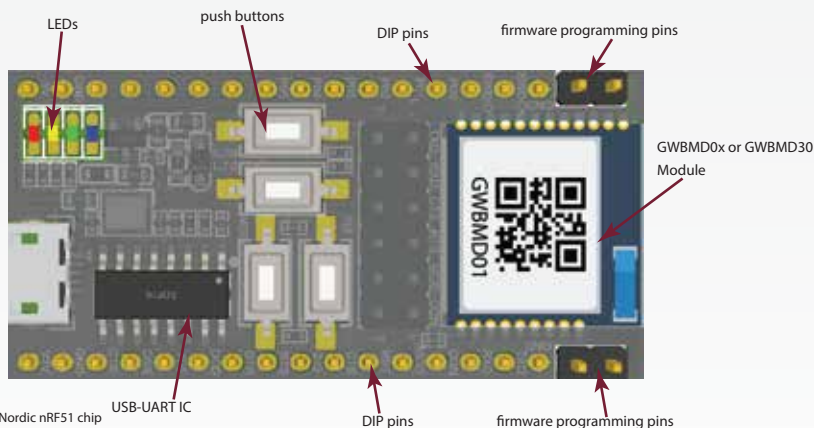
KSBU002 is DIP32 form factor, which direct connect to the pins of GWBMD0x or GWBMD30 modules, user can plug it on bread board or universal PCB board for project evaluation.

KSBU002 also embeds with USB-UART IC on board, allowing it to connect with any PC terminal software (appropriate module firmware is needed).

With on-board DC-DC chip, KSBU002 can be powered from USB port, 5VDC from the DIP pin. User can also apply 3.3V directly to the module from DIP pin. LEDs and push buttons are also on board for general purpose.

When GWBMD0x is on KSBU002, KATP UART-BLE tunneling firmware is also be pre-programmed. User can immediately connect it with PC or external circuit through either USB port or DIP pin for evaluation or project development without any firmware development.

- Embeds either GWBMD0x or GWBMD30 module
- DIP 32 form factor
- on board DC/DC circuit
- on board USB-UART convertor
- on board push buttons and LEDs
- Direct connect to DIP pins for external circuit connection
- Firmware program port
- Power from USB or DIP pins
- Either 5V or 3.3V input
- Firmware programming pins available
- Comes with UART-BLE tunnel firmware (GWBMD0x only)



- GWBMD0x is cored with Nordic nRF51 chip
- GWBMD30 is cored with Nordic nRF52832
- KATP firmware is UART-BLE tunneling firmware with AT-CMD
- Ordering part number:
 - KSBU002-01 : GWBMD01 embedded, KATP firmware
 - KSBU002-11 : GWBMD01 embedded, KATC firmware
 - KSBU002-02 : GWBMD30 embedded, no firmware
 - KSBU002-03 : GWBMD00 embedded, KATP firmware
 - KSBU002-13 : GWBMD00 embedded, KATC firmware